

GENERAL DESCRIPTION

Speed RT is a portable device to measure the displacement and speed of a swimmer. It is composed of a small winch that can be placed on the starting post, a data acquisition unit and a special software programme to visualise real time data on a PC and to perform post processing analysis.

Every phase of the action can be analysed: start, impact with water, underwater phase, stroke, tumbleturn.

Speed RT requires no batteries: the power to the acquisition unit comes from the USB connection.

Software and manuals are available in Italian and English.



FEATURES

- Plugs into PC USB port
- Hi-res (2000 cpr) optical encoder
- Max sampling frequency 200Hz
- Graphic User Interface for system control
- Real time visualisation of speed
- Probe for immediate speed assessment
- Powerful post-processing tool for filtering, analysis, data export in several formats
- IP 65 water resistant
- Aluminium case for safe transport
- Customisable to meet special user needs
- Compatible with Windows XP, Vista and 7

GENERAL CHARACTERISTICS

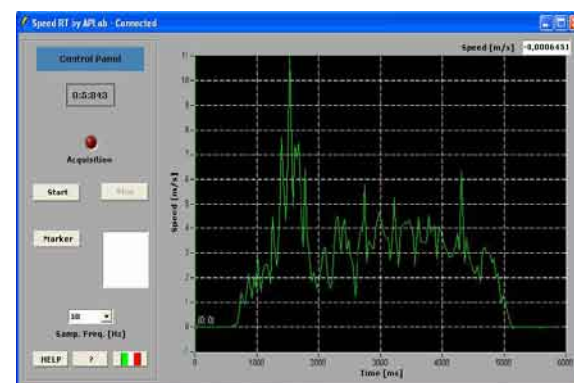
- Size: the whole kit is contained in a 46x33x17cm aluminium case
- Weight: 2kg + PC
- 5m USB cable for safe positioning of PC
- Kit includes device, USB cable, belt, installation CD, manuals (PC is optional)
- Guarantee: 24 months

CONTACT APlab

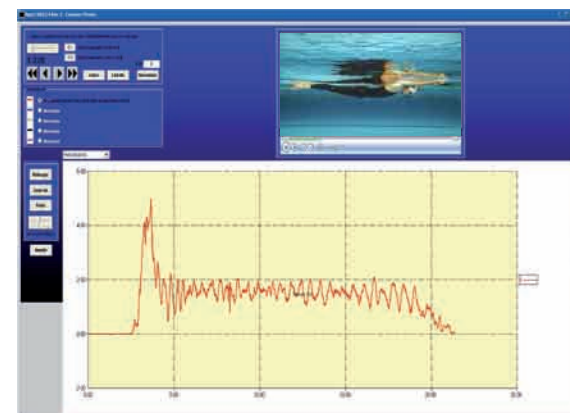
- Via Trissino 23
- 00137 Rome (Italy)
- tel: +39.06.82059398
- mobile: +39.320.1456792

CUSTOMISATION

- 10000 cpr encoder for extreme accuracy
- French version of software
- Special mechanical interfaces can be designed for integration with all sorts of equipment



Real time visualisation



Synchronous video and signal